



**NorthX Nickel Corp.**

**Corporate Presentation**  
**September 2024**

*A Leading Canadian Nickel  
Explorer & Developer*

northxnickel.com

CSE: NIX | OTC: NXNIF | FSE: 6YR



# Disclaimer



## General

This corporate presentation is intended to provide an overview of the business of NorthX Nickel Corp. (the "Company" or "NorthX"). It has been prepared for informational purposes only and does not purport to be complete. The information in this presentation is not intended to be relied upon as advice to investors or potential investors and does not take into account the investment objectives, financial situation or needs of any particular investor. This presentation should not be construed as legal, financial or tax advice to any individual, as each individual's circumstances are different. Readers should consult with their own professional advisors regarding their particular circumstances.

This presentation includes market and industry data which was obtained from various publicly available sources and other sources believed by the Company to be true. Although the Company believes it to be reliable, the Company has not independently verified any of the data from third-party sources referred to in this presentation or analyzed or verified the underlying reports relied upon or referred to by such sources, or ascertained the underlying assumptions relied upon by such sources. The Company does not make any representation as to the accuracy of such information.

No stock exchange, securities commission or other regulatory authority has approved or disapproved the information contained on this presentation. This presentation does not constitute an offer to sell or the solicitation of an offer to buy, nor shall there be any sale of securities of the Company in any jurisdiction in which an offer, solicitation or sale would be unlawful prior to registration or qualification under the securities laws of such jurisdiction. The securities of the Company described herein have not been and will not be registered under the United States federal or state securities laws and may not be offered or sold in the United States, or to, or for the account or benefit of, "U.S. Persons" as such term is defined in Regulation S under the United States Securities Act of 1933, as amended, unless an exemption from registration is available.

## Qualified Person

The scientific and technical information in this presentation has been prepared in accordance with the Canadian regulatory requirements set out in National Instrument 43-101 (Standards of Disclosure for Mineral Projects) and reviewed and approved by Jack Gauthier, VP of Exploration for NorthX Nickel Corp. and a "qualified person" as defined by NI 43-101.

Mineralization hosted on adjacent and/or nearby and/or geologically similar properties is not necessarily indicative of mineralization hosted on the Company's properties.

For additional information regarding NorthX's Grasset Project please refer to the Technical Report entitled "NI 43-101 Technical Report for the Grasset Property, Quebec, Canada" dated effective September 2, 2022, prepared by Carl Pelletier, P.Geo., available under NorthX's profile on [www.sedarplus.ca](http://www.sedarplus.ca)

## Forward Looking Statements

This presentation contains "forward looking statements" regarding the Company within the meaning of applicable securities legislation, including statements as to future events, results and plans. Forward-looking statements are sometimes but not always identified by such words as "targeted", "can", "will", "anticipates", "projects", "expects", "intends", "likely", "plans", "should", "could" or "may" or grammatical variations thereof. These include, without limitation, statements with respect to: obtaining the required regulatory approvals and fulfilling other closing conditions related to proposed transactions; completion of proposed transactions and financings, and the terms of such transactions and financings; the Company's use of available funds; mining operations, anticipated mineral recoveries, projected quantities of future mineral production, interpretation of drill results and other technical data; anticipated development, expansion and exploration activities; viability of the Company's projects and properties; the acquisition of additional property rights; possible events, conditions or financial performance that is based on assumptions about future economic conditions and courses of action; the strategic plans, timing, costs and expectations for the Company's future exploration on its properties; information with respect to grades from sampling results and drilling results; the accessibility of future exploration activities at the Company's properties and license areas; the composition of the board of directors and management team of NorthX; the filing of a technical report supporting technical disclosure made by the Company; exploration and development of the Company's assets; completion of a share distribution by Wallbridge; the issuance of common shares of the Company to certain finders; the filing of a listing statement in respect of proposed transactions; commencement of trading of common shares of the Company; the impact of proposed transactions on the Company's business; mining operations; the business plan of NorthX; projected quantities of future mineral production, interpretation of drill results and other technical data; anticipated development, expansion and exploration activities; viability of the Company's projects and properties; and the entering into of ancillary agreements in connection with proposed transactions.

These forward-looking statements reflect the Company's current beliefs and are based on information currently available to the Company and assumptions the Company believes are reasonable. The Company has made various assumptions, including, among others, that: the

results of proposed exploration activities are as anticipated; the Company's operations are not disrupted or delayed by unusual geological or technical problems; the anticipated cost of planned exploration activities; the Company has the ability to explore and develop the Company's properties; general business and economic conditions will not change in a material adverse manner; financing will be available if and when needed and on reasonable terms; third party contractors, equipment and supplies and governmental and other approvals required to conduct the Company's planned exploration activities will be available on reasonable terms and in a timely manner; the Company's current corporate activities will proceed as expected; and the effects of by COVID-19 on the operations of the Company will remain consistent with the Company's expectations.

Actual results and developments may differ materially from results and developments discussed in the forward-looking statements as they are subject to a number of significant risks and uncertainties, including: that there is no assurance that the Company will obtain the requisite shareholder and regulatory approvals for proposed transactions; there is no assurance that proposed transactions will be completed as anticipated, or at all; there is no assurance that any proposed financings will be completed or as to the actual offering price or gross proceeds to be raised in connection with such financings; following completion of any proposed transactions, the Company may require additional financing from time to time in order to continue its operations which may not be available when needed or on acceptable terms and conditions acceptable; compliance with extensive government regulation; domestic and foreign laws and regulations could adversely affect the Company's business and results of operations; the stock markets have experienced volatility that often has been unrelated to the performance of companies and these fluctuations may adversely affect the price of the Company's securities, regardless of its operating performance; fluctuations in metals prices, price of consumed commodities and currency markets; future profitability of mining operations; access to personnel; results of exploration and development activities; accuracy of technical information; risks related to ownership of properties; risks related to mining operations; risks related to mineral resource figures being estimates based on interpretations and assumptions which may result in less mineral production under actual conditions than is currently anticipated; the interpretation of drilling results and other geological data; receipt, maintenance and security of permits and mineral property titles; environmental and other regulatory risks; changes in operating expenses; the impact of COVID-19; the ongoing military conflict in Ukraine, and other risk factors set out in the Company's public disclosure documents. Although the Company has attempted to identify significant risks and uncertainties that could cause actual results to differ materially, there may be other risks that cause results not to be as anticipated, estimated or intended. Certain of these risks and uncertainties are beyond the Company's control. Consequently, all of the forward-looking statements are qualified by these cautionary statements, and there can be no assurances that the actual results or developments will be realized or, even if substantially realized, that they will have the expected consequences or benefits to, or effect on, the Company.

The information contained in this presentation is derived from management of the Company and otherwise from publicly available information and does not purport to contain all of the information that an investor may desire to have in evaluating the Company. The information has not been independently verified, may prove to be imprecise, and is subject to material updating, revision and further amendment. While management is not aware of any misstatements regarding any industry data presented herein, no representation or warranty, express or implied, is made or given by or on behalf of the Company as to the accuracy, completeness or fairness of the information or opinions contained in this presentation and no responsibility or liability is accepted by any person for such information or opinions. The forward-looking statements and information in this presentation speak only as of the date of this presentation and the Company assumes no obligation to update or revise such information to reflect new events or circumstances, except as may be required by applicable law. Although the Company believes that the expectations reflected in the forward-looking statements and information are reasonable, there can be no assurance that such expectations will prove to be correct. Because of the risks, uncertainties and assumptions contained herein, prospective investors should not read forward-looking information as guarantees of future performance or results and should not place undue reliance on forward-looking information. Nothing in this presentation is, or should be relied upon as, a promise or representation as to the future.

To the extent any forward-looking statement in this presentation constitutes "future-oriented financial information" or "financial outlooks" within the meaning of applicable Canadian securities laws, such information is being provided to demonstrate the anticipated market penetration and the reader is cautioned that this information may not be appropriate for any other purpose and the reader should not place undue reliance on such future-oriented financial information and financial outlooks. Future-oriented financial information and financial outlooks, as with forward-looking statements generally, are, without limitation, based on the assumptions and subject to the risks set out above. The Company's actual financial position and results of operations may differ materially from management's current expectations and, as a result, the Company's revenue and expenses. The Company's financial projections were not prepared with a view toward compliance with published guidelines of International Financial Reporting Standards and have not been examined, reviewed or compiled by the Company's accountants or auditors. The Company's financial projections represent management's estimates as of the dates indicated thereon.

# Investment Highlights



Grasset is the only undeveloped nickel sulphide deposit (>50kt Ni, >1.5% NiEq) in NA not held by a major



## Asset Portfolio

### Grasset

100% owned, 5.5 Mt Indicated Resource<sup>1</sup> @ 1.53% NiEq in the Abitibi Greenstone Belt with room to grow

### Sudbury

Large, strategic portfolio in the world-renowned Sudbury Basin



## Strategy

Expand existing Grasset high-grade nickel sulphide resource  
Discover new nickel deposits on our 23-km Grasset claim block

Generate and target industry-significant high-grade nickel sulphide deposits



## Jurisdiction

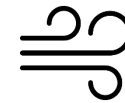
Mining friendly, infrastructure-rich, top-tier exploration tax incentives & strong working relationships with First Nations communities

- Ontario & Quebec -



## Team

A strong and seasoned team with a diverse skillset and a track record of advancing and de-risking mining assets from discovery to production



## Market Tailwinds

Growing demand for clean energy technologies and electric vehicles expected to drive demand for battery metals, particularly nickel and cobalt

# Leadership Team

*A track record of success – grassroots through production*



## Management



**Tom Meyer**  
President, CEO & Director

CFA, P.Eng with 25+ years experience in the mining sector. Former mining equity research and commodity analyst with previous roles at Trevali, Falconbridge and Inco



**Jacquelin (Jack) Gauthier**  
VP Exploration

P.Geo with 40+ years experience in the mining sector. Previous roles with NioBay Metals, Kinross Gold, Bema Gold, Cambior, Azimut Exploration, Geomega Resources, Noranda



**John Townend**  
Senior Manager Technical Services & Exploration

P. Geo with 35+ years of experience working in mineral exploration, mines geology and engineering. Previous roles with Hudbay Minerals and Vale Inco



**Sherry Roberge**  
Chief Financial Officer & Corporate Secretary

MPAcc, CPA, CA with 15+ years experience in the mining sector. Previous roles with Defiance Silver, Geologix Explorations and BDO Canada

## Board



**Simon Marcotte**  
Executive Chairman

CFA, 25 years of experience in the capital markets, including with CIBC World Markets, Sprott & Cormark Securities. Actively involved in merchant banking activities in the junior mining industry. President & CEO of Northern Superior Resources Inc.



**Christian Kargl-Simard**  
Director

P.Eng with 20+ years experience in the mining sector. Founder, President and CEO of Adventus Mining, Chairman of Surge Copper Corp. Former investment banker at Raymond James & Haywood Securities



**Brian Penny**  
Director

CPA, CMA with 30+ years experience in the mining sector. CEO of Wallbridge Mining Company. Former EVP and CFO of New Gold. Former VP Finance and CFO of Kinross



**Adree DeLazzer**  
Director

B.Sc. in Earth Science, skilled exploration professional geologist. Vice President Exploration for Northern Superior Resources Inc. Independent director of Mason Resources since December 2022

# Technical Advisory Committee

*A seasoned team, a diverse skillset, and track record of advancing discoveries to production*



**Dr. Neil O'Brien**  
TAC Chair &  
Corp. Advisor

- Economic geologist and former mining executive with 30+ years of mining experience in base metals exploration, including magmatic nickel-copper-platinum group element ("Ni-Cu-PGE") sulphide deposits
- International experience on 6 continents, in all stages of mineral exploration and development of economic mineral resource projects, mining project evaluation and strategic corporate development activities
- Retired in 2018 from Lundin Mining Corporation as Senior Vice President, Exploration & New Business Development
- PhD from Queen's University in Geological Sciences



**Brian Booth**  
TAC Member

- Experienced mining executive with 40+ years of experience across the mineral exploration and mining sectors with major and junior mining companies
- Held various exploration management positions at Inco Limited over a 23-year career, including Manager of Exploration - North America and Europe, Manager of Global Nickel Exploration and Managing Director PT Ingold for Australasia
- Discovered the Douay West gold deposit in Québec, conducted the preliminary assessment of the Voisey's Bay Ni-Cu-Co discovery for Inco, and was involved, through a joint venture with Highlands Gold, in the discovery of the Beutong copper porphyry in Sumatra



**Alan King**  
TAC Member

- 40+ years of experience in geophysics, mineral exploration and resource development in Canada and internationally
- Former senior geophysicist INCO/Vale, then Manager of Geophysics with responsibility for their global exploration programs that included extensive experience in exploration target development for Ni-Cu-PGE deposits
- Worked on geophysical applications for base metals, iron, manganese, coal and other commodities as well as target generation using regional and global data sets
- B.Sc. in Geology and Physics from the University of Toronto and an M.Sc. in Geophysics from Macquarie University



**Dr. Michael Leshner**  
TAC Member

- Professor Emeritus of Economic Geology in the Mineral Exploration Research Centre (MERC), Harquail School of Earth Sciences, and Goodman School of Mines at Laurentian University
- Research Chair in Mineral Exploration, Founding Director of MERC, and as Director of Mining Initiatives designed and founded the Laurentian School of Mines (now Goodman School of Mines)
- Worked on Ni-Cu-PGE deposits in Brazil, China, Manitoba, Ontario, Québec, Russia, and Western Australia; Cr deposits in northern Ontario; the geochemistry of felsic volcanic rocks associated with VMS systems; Au deposits in Ontario, Western Australia, and the southern Appalachians; and Fe deposits in Labrador-Québec

# Share Structure & Performance - CSE: NIX



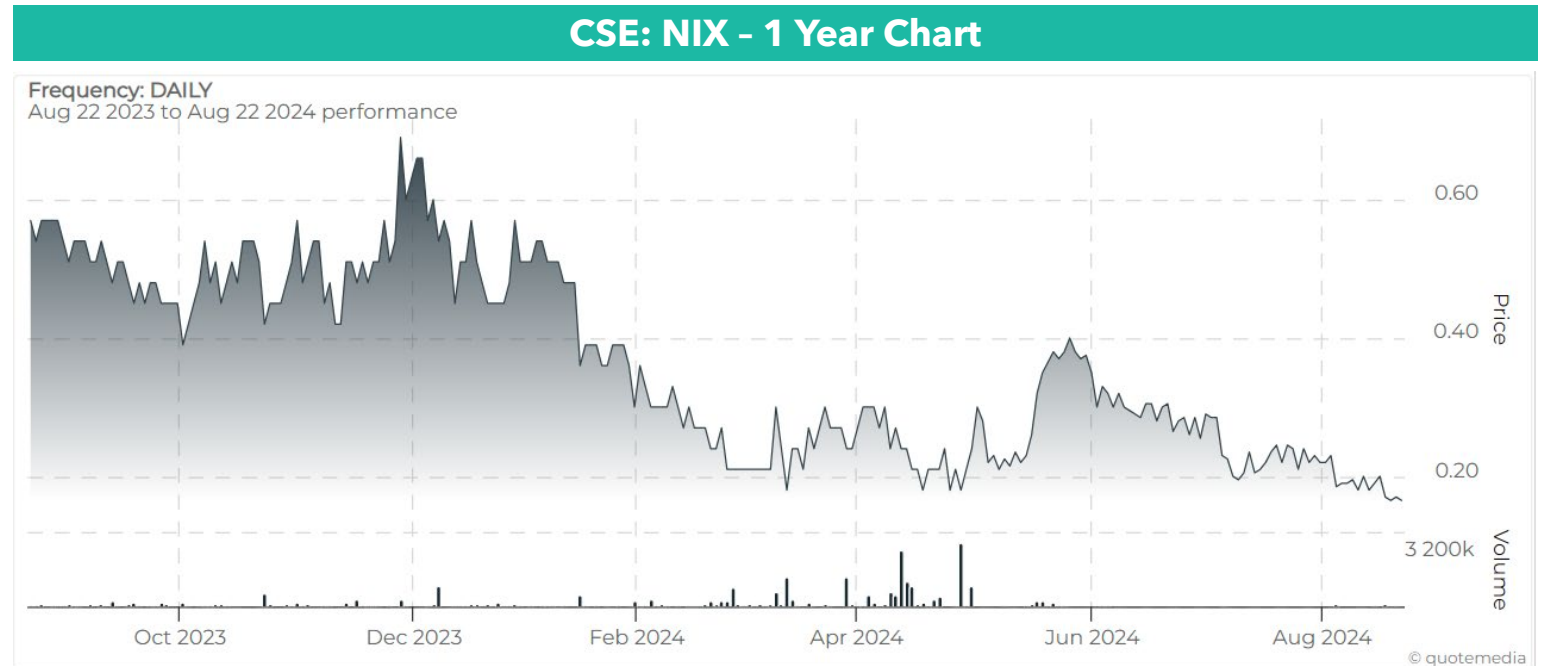
Canadian Ni-Cu-Co-PGM exploration & development

	\$\$	Exp.	millions
<b>Issued &amp; Outstanding</b>			<b>28.51</b>
Warrants	6.12	Nov-24	1.95
Warrants	0.96	Nov-26	3.85
Warrants	0.96	May-25	0.02
Warrants	0.36	May-27	9.48
Stock Options	2.16	Jun-26	0.01
Stock Options	9.18	Oct-26	0.07
Stock Options	3.30	Dec-27	0.35
Stock Options	3.30	Mar-28	0.03
Stock Options	2.28	Mar-28	0.02
Stock Options	0.96	Jun-28	0.04
Stock Options	0.81	Jul-28	0.00
Stock Options	0.48	Dec-28	0.83
Stock Options	0.28	Jul-29	0.43
Restricted Share Units	-	Dec-25	0.03
Restricted Share Units	-	Dec-26	0.47
Restricted Share Units	-	Jul-27	0.53
Deferred Share Units	-	-	1.17
<b>Fully Diluted</b>			<b>47.79</b>

Cash (June 30, 2024)	2.38
Basic Market Cap (August 22, 2024) <sup>1</sup>	4.70
Basic Enterprise Value (August 22, 2024)	2.32

Insiders	4.4%
Advisors & Associates	2.5%
Wallbridge	15.8%
Mason Resources	14.6%
Retail & Other	26.8%
Inst/Strat/HNW	35.9%

1) As of August 22, 2024, share price of \$0.165



Source: quotemedia.com, August 22, 2024



# Asset Portfolio



Resource growth in the Abitibi and a pipeline of underexplored projects in Sudbury

"Underexplored optionality in an infrastructure-rich camp"

## Sudbury

The third-largest land package in the world's second-largest nickel district

37 properties and 300 km<sup>2</sup> in the world-renowned Sudbury Basin



## Grasset

Cornerstone of NorthX Nickel's portfolio, located in the Abitibi Greenstone Belt

Indicated Resource<sup>1</sup> of **5.5 Mt @1.53% NiEq**

"H1X discovery zone open for expansion"



# Grasset Nickel Project

One of the Abitibi's largest nickel sulphide deposits



## Underexplored Opportunity

Current 5.5 Mt @ 1.53% NiEq Indicated Resource<sup>1</sup> was created from essentially one successful drill campaign in 2014-15 with minimal follow up led to H1X Discovery Zone in 2H2023

## Positive, Simple Metallurgy

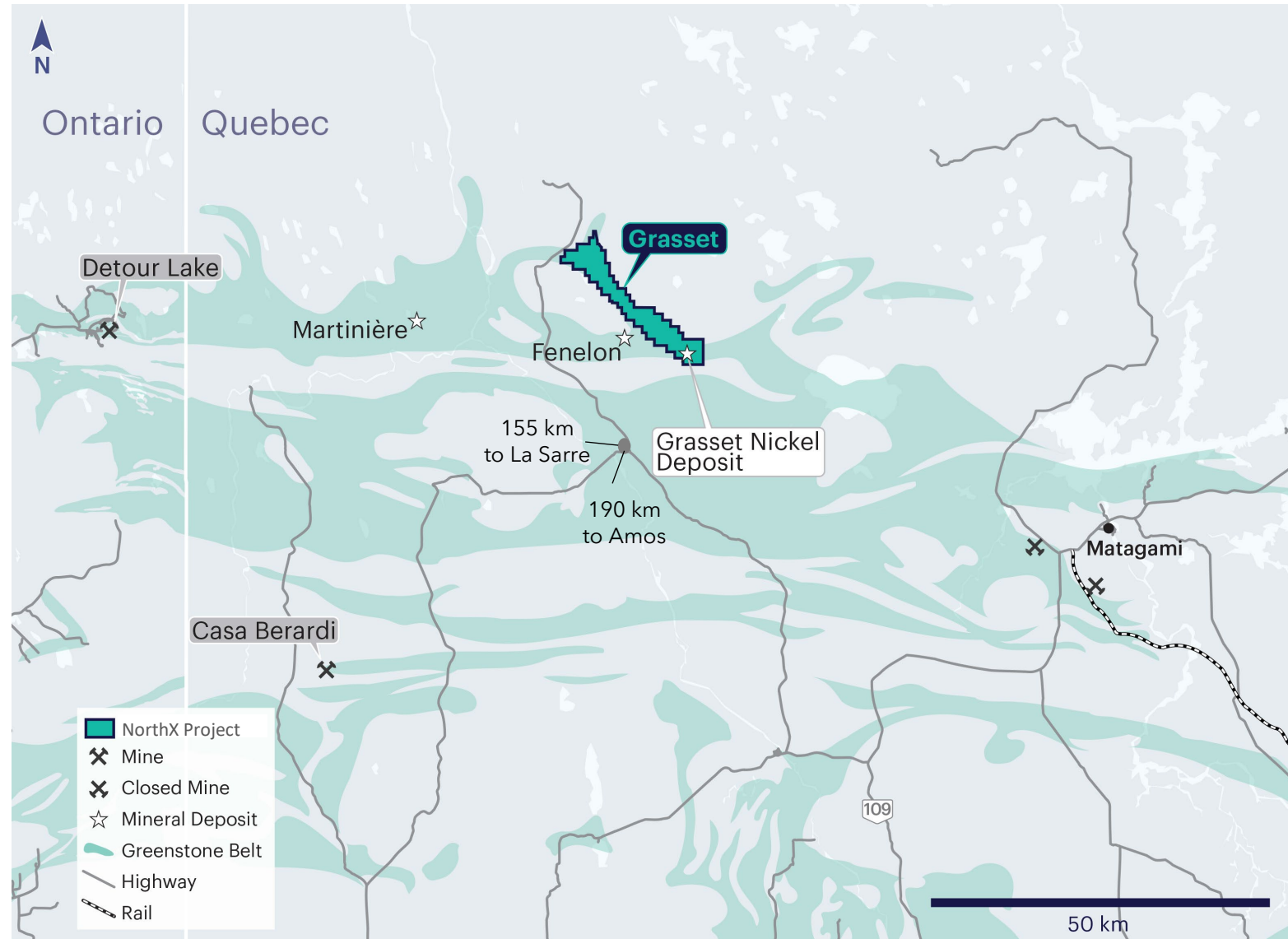
Initial metallurgical testing yields high quality nickel concentrate (~13% Ni) via conventional flotation flowsheet (Recovery ~86%)

## World Class Jurisdiction

Developed infrastructure in place with year-round road access via paved highway - 77 km to Matagami (airport + rail), 20 km to power. Excellent tax incentives

## Serendipitous Discovery

- 2012** -- Balmoral Resources makes a significant nickel discovery while exploring for gold
- 2020** -- Wallbridge Mining acquires Balmoral for its gold assets
- 2022** -- NorthX Nickel acquires Grasset and the entire nickel portfolio of Wallbridge



<sup>1</sup> For additional information regarding NorthX Nickel's Grasset Project please refer to the Technical Report entitled "NI 43-101 Technical Report for the Grasset Property, Quebec, Canada" dated effective September 2, 2022, prepared by Carl Pelletier, P.Geo., available under NorthX's profile on [www.sedarplus.ca](http://www.sedarplus.ca)

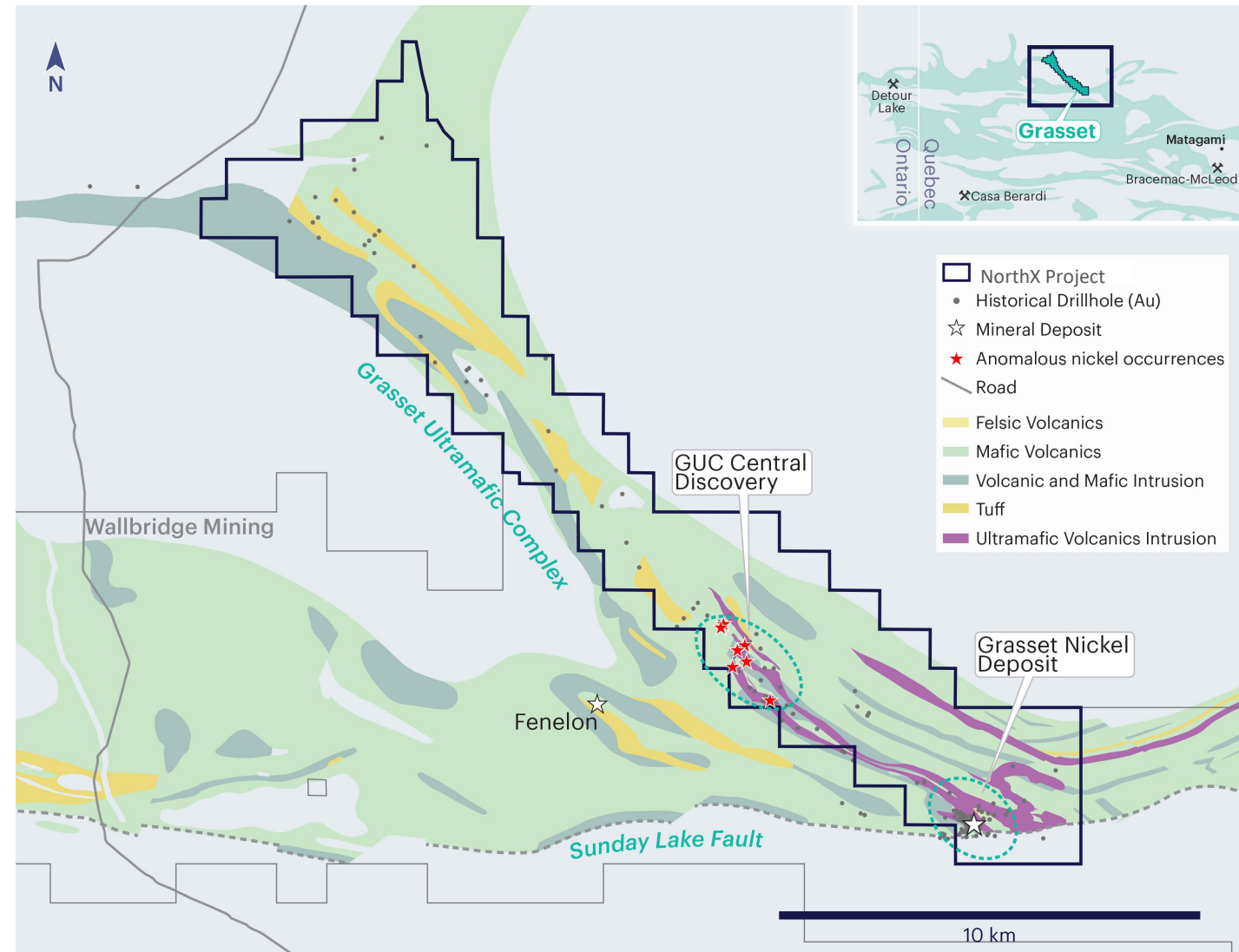


# District Scale Potential



100% owned by NorthX - 5.5 Mt @ 1.53% NiEq Indicated Resource<sup>1</sup>

- 23 km NW trending corridor containing ultramafic bodies
- Located in the volcano-sedimentary belt of the Abitibi subprovince
- Majority of regional historical drilling on the project was designed to test VMS targets
- GUC Central discovery 7 km NW of Grasset Deposit hosts 950m thick ultramafics with several horizons of nickel sulphides points to potential for further discoveries
- Excellent potential for multiple deposits like that of Raglan, Kambalda, and other camps



# Grasset Ultramafic Complex



Fertile and highly-prospective ultramafic corridor that has seen little-to-no nickel-focused exploration

## Fertile Trend With District Scale Potential - Underexplored

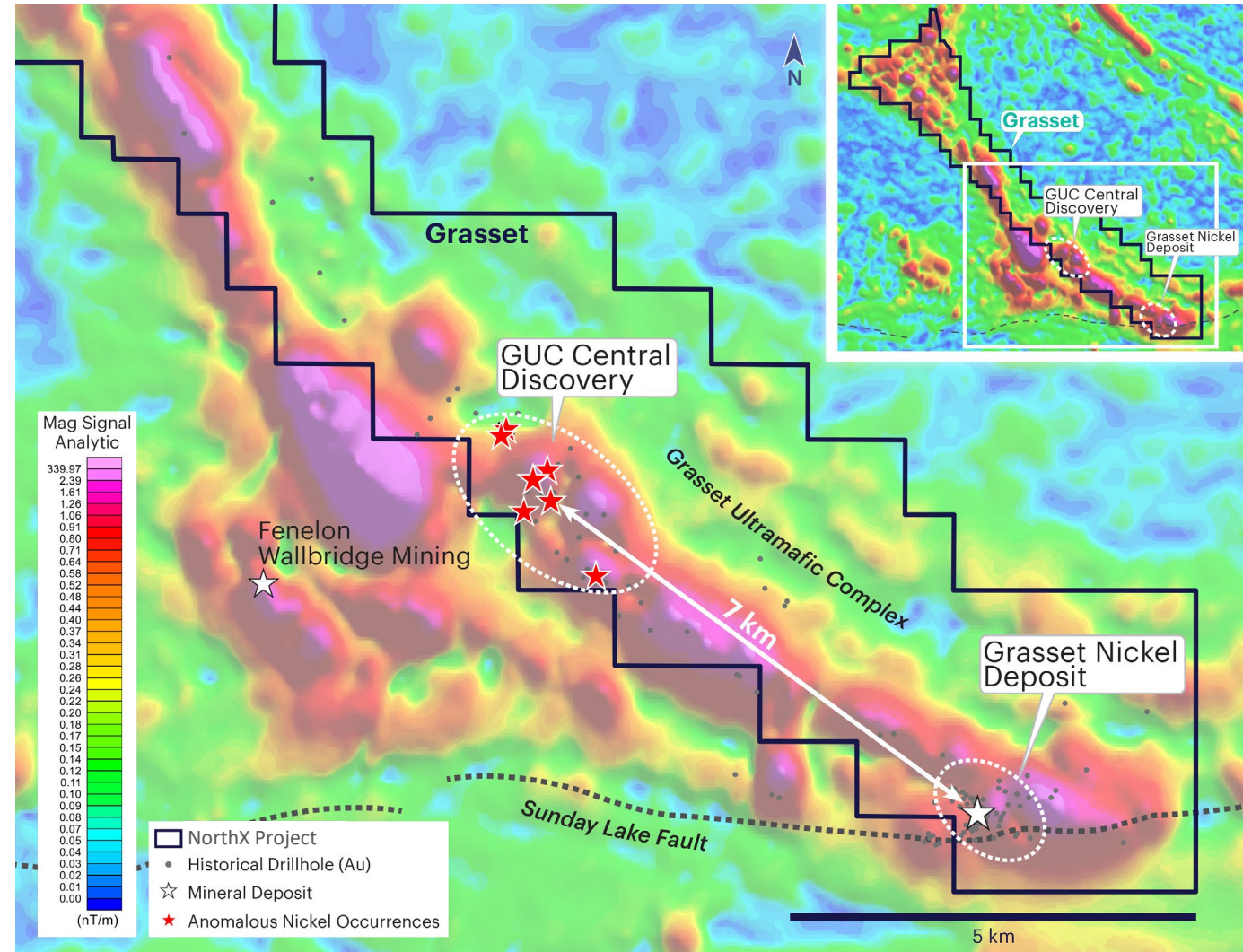
- Numerous coincident magnetic and conductivity anomalies along the Grasset Ultramafic Complex require drill testing

## Developing Model and Intellectual Property

- Additional work required to refine the host ultramafic architecture and identify geophysical signatures associated with magmatic sulphides

## Innovative and Modern Exploration Methods

- Thick glacial till cover of Northern Abitibi has hindered past exploration efforts, resulting in geological interpretations that are heavily reliant on drilling data
- InfiniTEM® XL survey enables a deeper, wider range of geophysical exploration and should detect anomalous massive sulphide conductors at a depth of 800 -1,000 m
- Sonic drill testing of glacial till and bedrock to detect geochemically anomalous nickel occurrences in ultramafics





# Grasset Exploration Objective - Resource Expansion

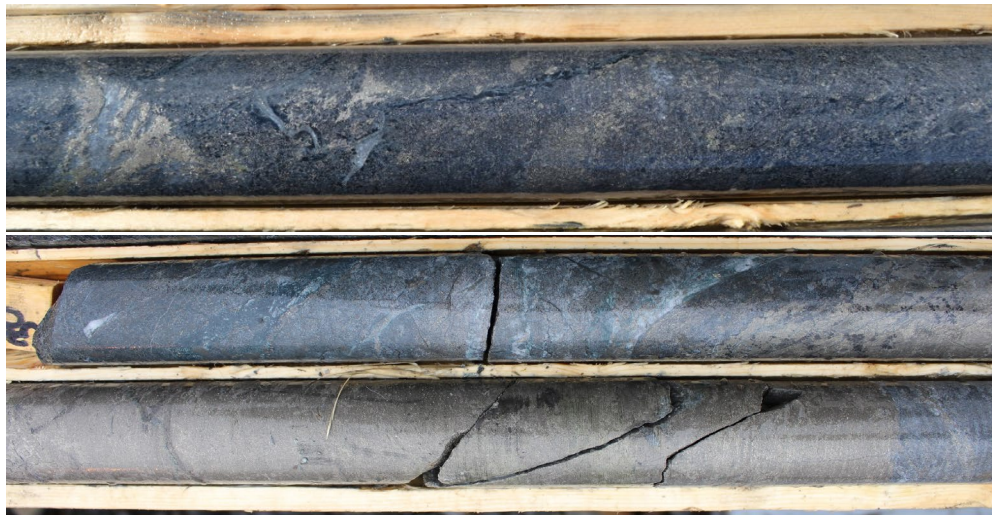


5.5 Mt @ 1.53% NiEq Indicated Resource<sup>1</sup> with room to grow

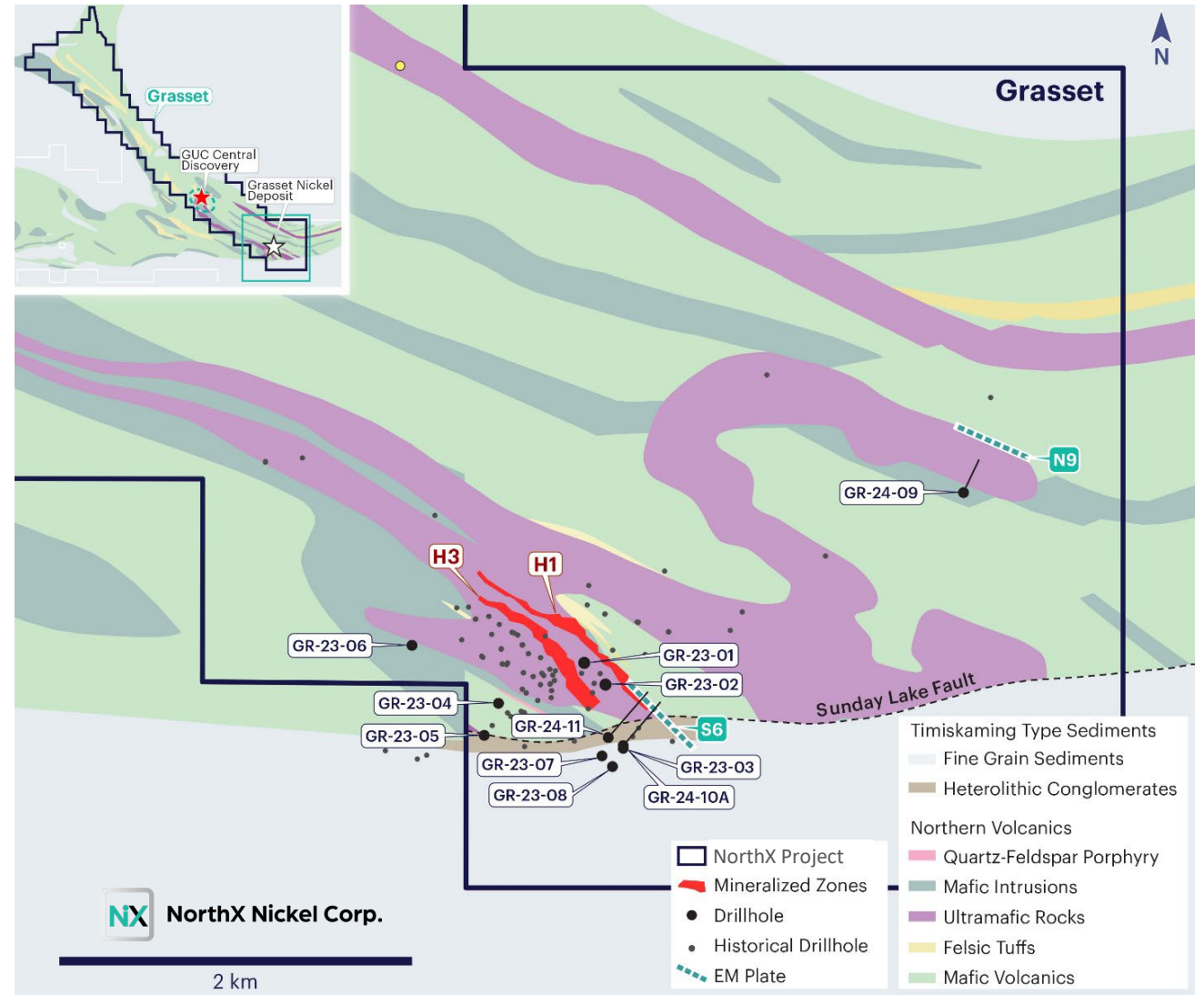
## Two High-Grade Lenses

- H1 & H3 - two sub-vertical high-grade sulphide bearing horizons within ultramafic host units striking NW-SE
- H3 lens has a currently defined ~500 m strike length and hosts the bulk of the high-grade mineralization
- H1 lens has a currently defined ~900 m strike length and lower grade (<1% Ni) but more extensive than H3 and high-grade at depth

## Classic Sulphide Segregation



Source: Wallbridge Corporate Presentation - January 2022



Source: NorthX Nickel Press Release - March 21, 2024

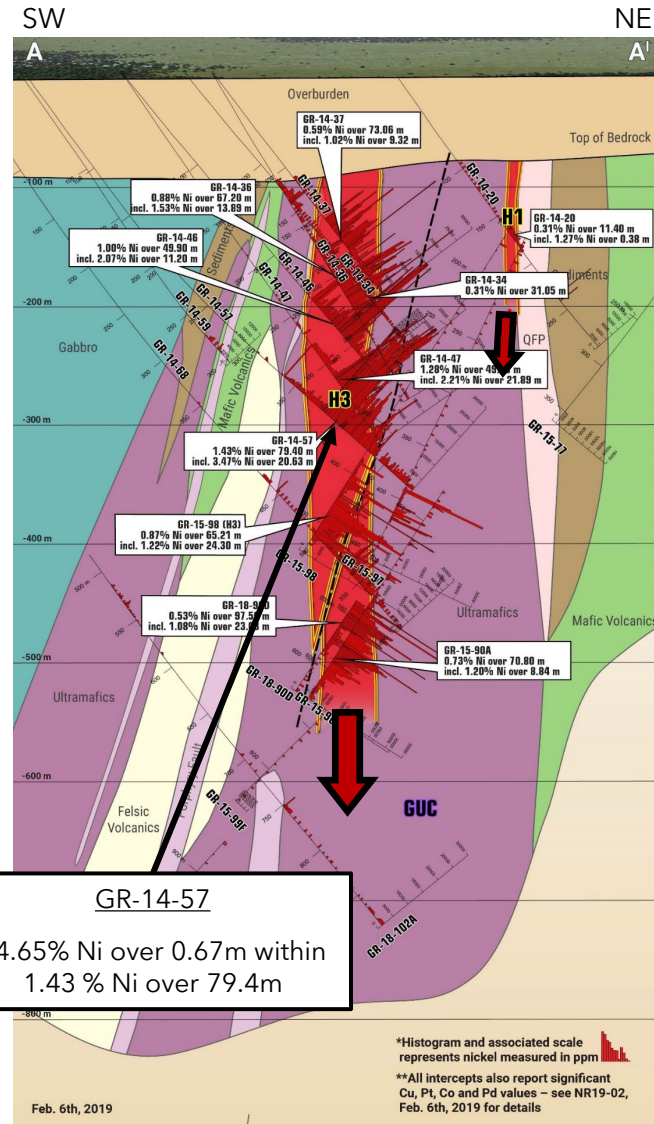


# Grasset Deposit: Two Lenses of High-Grade Massive Sulphides

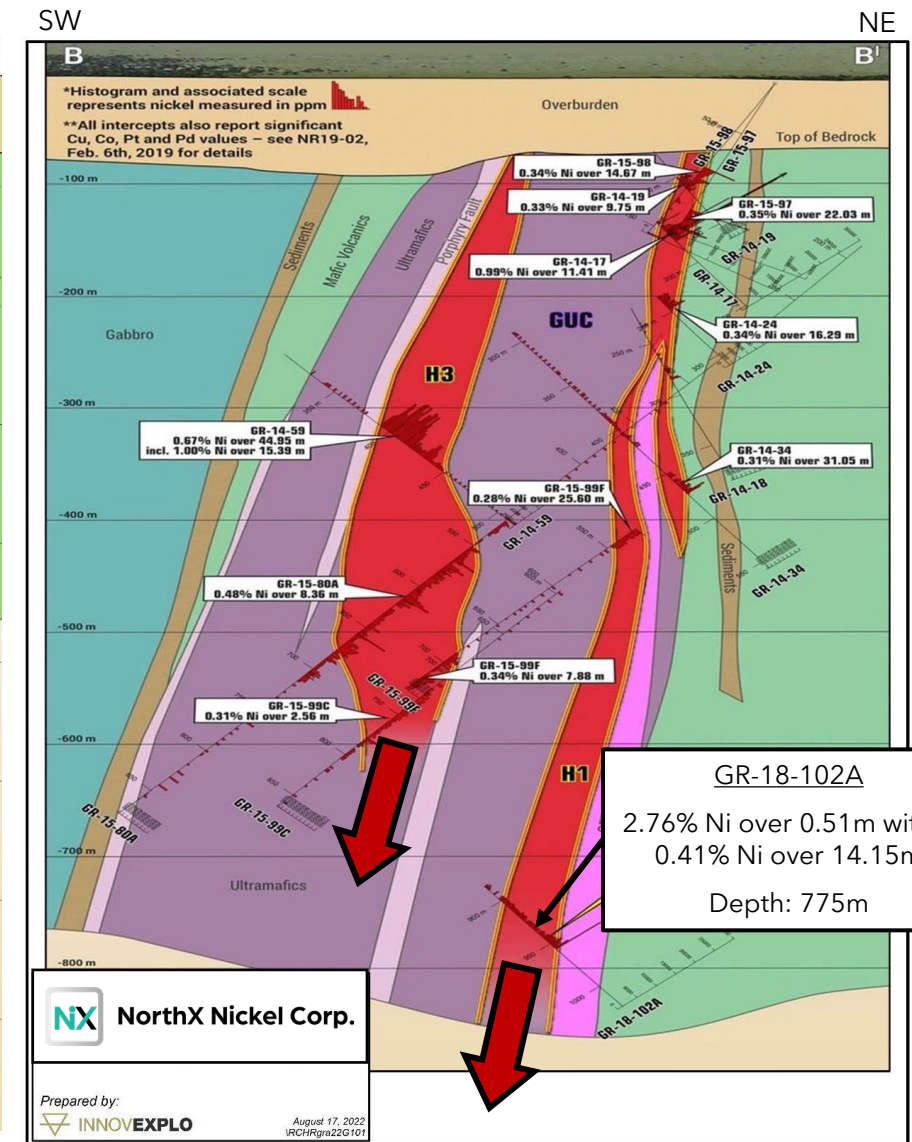


H1 & H3 lenses - each open at depth, H1 and H1X Discovery Zone largely untested

- Two high-grade sub-vertical massive sulphide lenses within a ~200 m thick mineralized footprint
- Ore lenses are believed to have been once horizontal and subsequently tilted sub-vertically
- Resource has a defined vertical depth of 600 m, with the deepest mineralization intercepted at 775 m (GR-18-102A) in H1
- Massive sulphide grades >14% Ni (GR-14-57) in H3



Source: Wallbridge Corporate Presentation - January 2022



NX NorthX Nickel Corp.

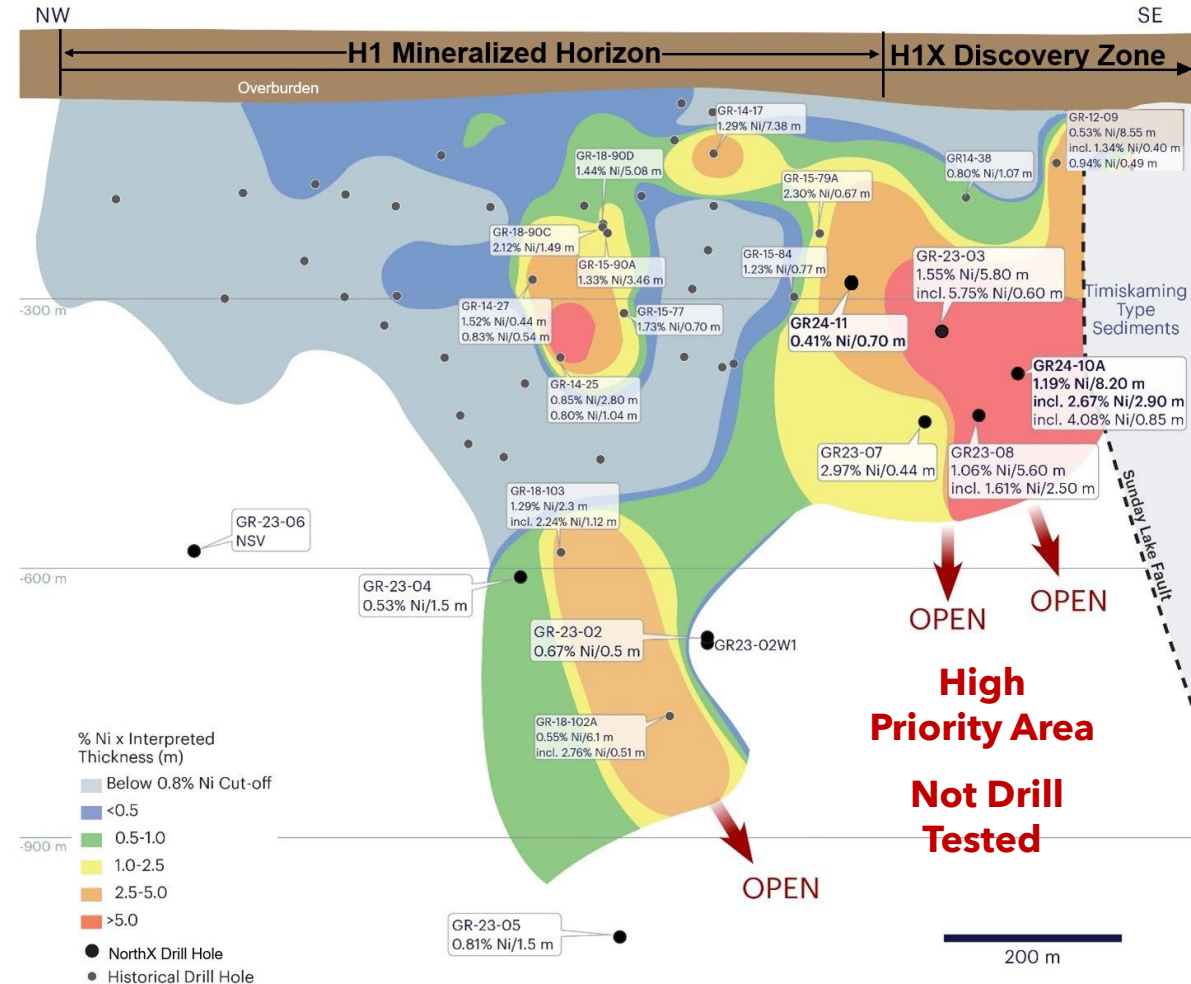
Prepared by:  
INNOVEXPLO  
August 17, 2022  
IRCHIRgra22G101

# 2023 Summer Drilling: Discovery of New Zone in H1



## High-Grade Massive Sulphides Discovered in NorthX Nickel's First Exploration Hole

- GR23-03, NorthX Nickel's third hole of the summer program (first exploration hole in 2023), intersected 1.55% Ni over 5.80 metres, including 5.75% Ni over 0.60 metres at a depth of 330 metres
- The 5.80 metre interval includes 1.17 g/t Pt-Pd, with a subinterval of 5.53 g/t Pt-Pd over 0.60 metres
- The thickest, highest grade nickel sulphide mineralization intersected to date in the H1 Horizon
- H1 Horizon remains open at depth and along strike
- This portion of the H1 Horizon has seen very little past drilling as the previous operator focused on the larger H3 Horizon



**Thickest, highest-grade Ni content to date in H1 -> New unexplored high-grade zone - H1X**

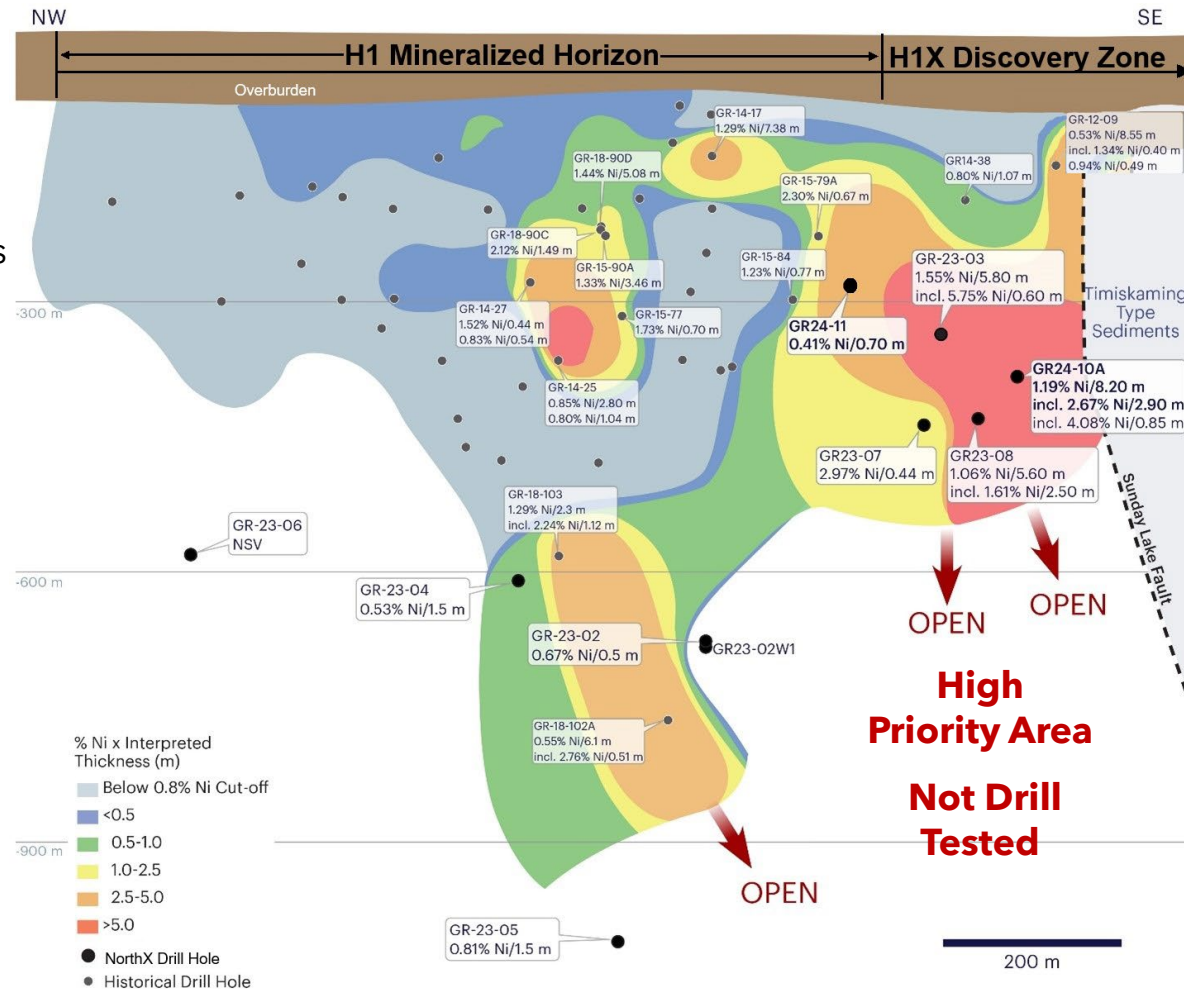
# Fall & Winter Drilling - Extending the H1X Discovery Zone



## 2023 Fall & 2024 Winter Drilling

- Two holes (1,132 m) drilled in December 2023 and three holes drilled in January 2024 (1,323 m) successfully extended mineralization of the H1X Discovery Zone to a depth of approximately 430 metres
- Confirms the extension of H1 mineralization at depth with nickel grades higher than the Indicated Resource grade of the H1 Horizon (0.82% Ni)
- Demonstrates the presence of a strong mineralizing system that is still open in all directions below 250 metres in the southeastern portion of the H1 horizon
- Grades and textures observed indicated the potential for recent intersections to be at the fringe of a **new high-grade-hosting ultramafic conduit**

Hole ID	From (m)	To (m)	Length (m)	Ni (%)	Cu (%)	Co (%)	Pt (g/t)	Pd (g/t)
GR23-07	516	516	0.44	2.97	0.10	0.07	1.14	2.96
GR23-08	490	496	5.60	1.06	0.14	0.03	0.23	0.51
<i>Including</i>	493	496	2.50	1.61	0.24	0.05	0.34	0.75
GR24-10A	440	448	8.20	1.19	0.17	0.03	0.27	0.72
<i>Including</i>	445	448	2.90	2.67	0.44	0.06	0.62	1.70
<i>Including</i>	447	448	0.85	4.08	0.98	0.09	0.91	3.67
GR24-11	291	291	0.70	0.41	0.05	0.01	0.10	0.21



**Objective is to find the thicker portion (base) of the H1 massive sulphide channel**



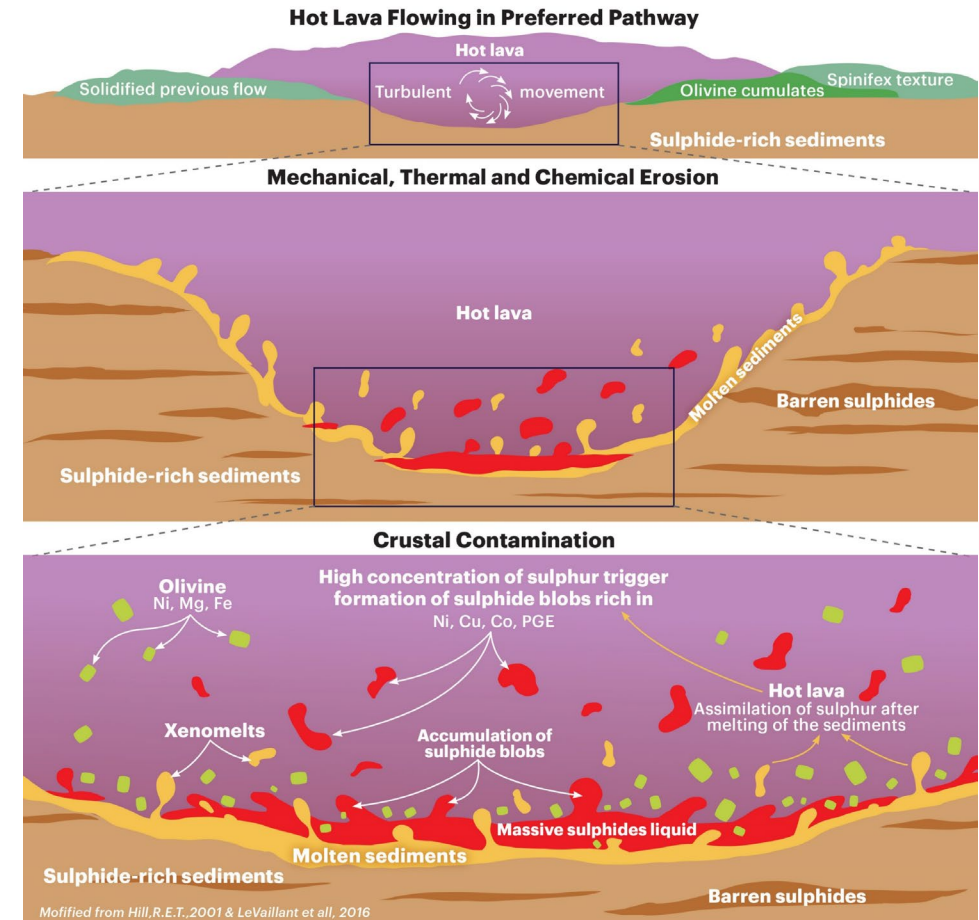
# Conceptual Ore Formation Model



Since the discovery at Kambalda (1960's), komatiites have been recognized as significant hosts of magmatic nickel ores

## Key Features of a Komatiite-hosted Nickel Deposit

- Komatiites are extremely hot ultramafic (low silica, rich in iron & magnesium) lavas largely restricted to the Archean Eon (3.8 to 2.4 billion years ago)
- The hot komatiite lava core flows along a trough-like channel that it creates in underlying sulphur-bearing country rocks by thermo-mechanical erosion
- The assimilated sulphur scavenges Ni, PGE, Cu, Co from the lava, forming a metal-enriched sulphide liquid which drops to the bottom of the channel forming Ni-Cu-Co-PGE rich massive sulphides
- Country rock xenoliths and xenomelts in ores and element anomalies in host rocks are indicators of a contamination process related to mineralization



**Next phase of drilling will test the width and extent of the H1 channel**

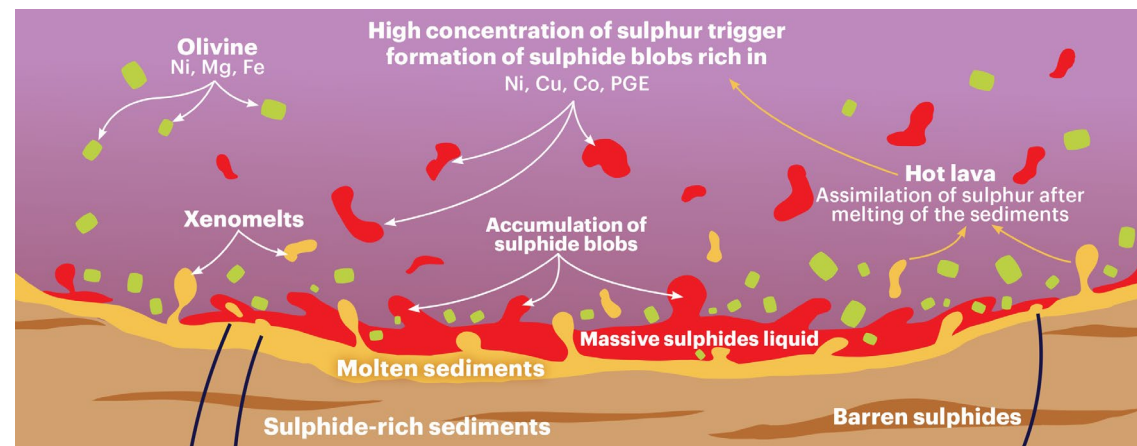
# The Necessary Building Blocks In Place

Evidence of a rich mineralizing process at Grasset

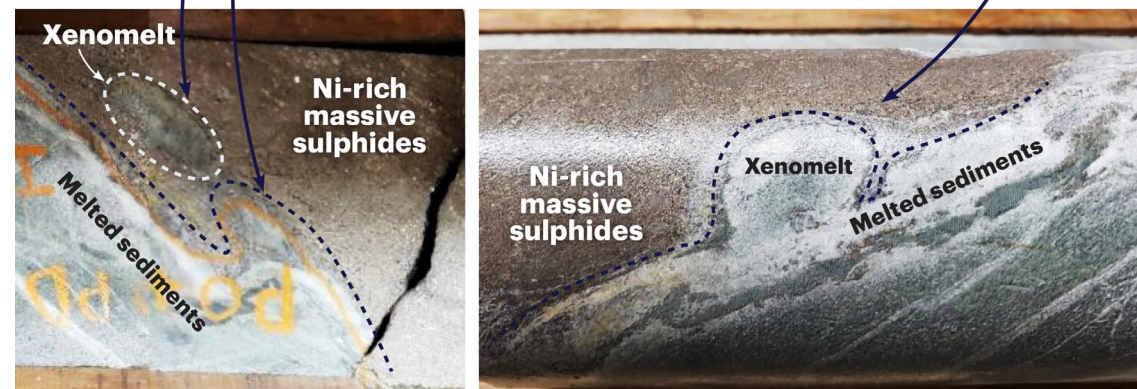


## Hole GR23-03 in Context - H1X Discovery Zone

- Sulphur from the country rock saturates lava and results in the formation of immiscible sulphide blobs rich in Ni, Cu Co and PGE
- Sulphides settle to the base of the flow channel due to density differences
- Xenomelts in massive sulphides at the base of an ultramafic flow are evidence that the top of the flows are facing to the southwest
- This feature and the higher grade has not been seen in the shallower holes in H1, suggesting the width of the channel (step-out drilling) and extent of channel (deeper drilling) require additional testing
- Komatiitic volcanic environment much like the Raglan and Kambalda nickel camps



Hole GR23-03 Nickel-Rich Sulphide with Xenomelt at the Bottom of a Lava Flow

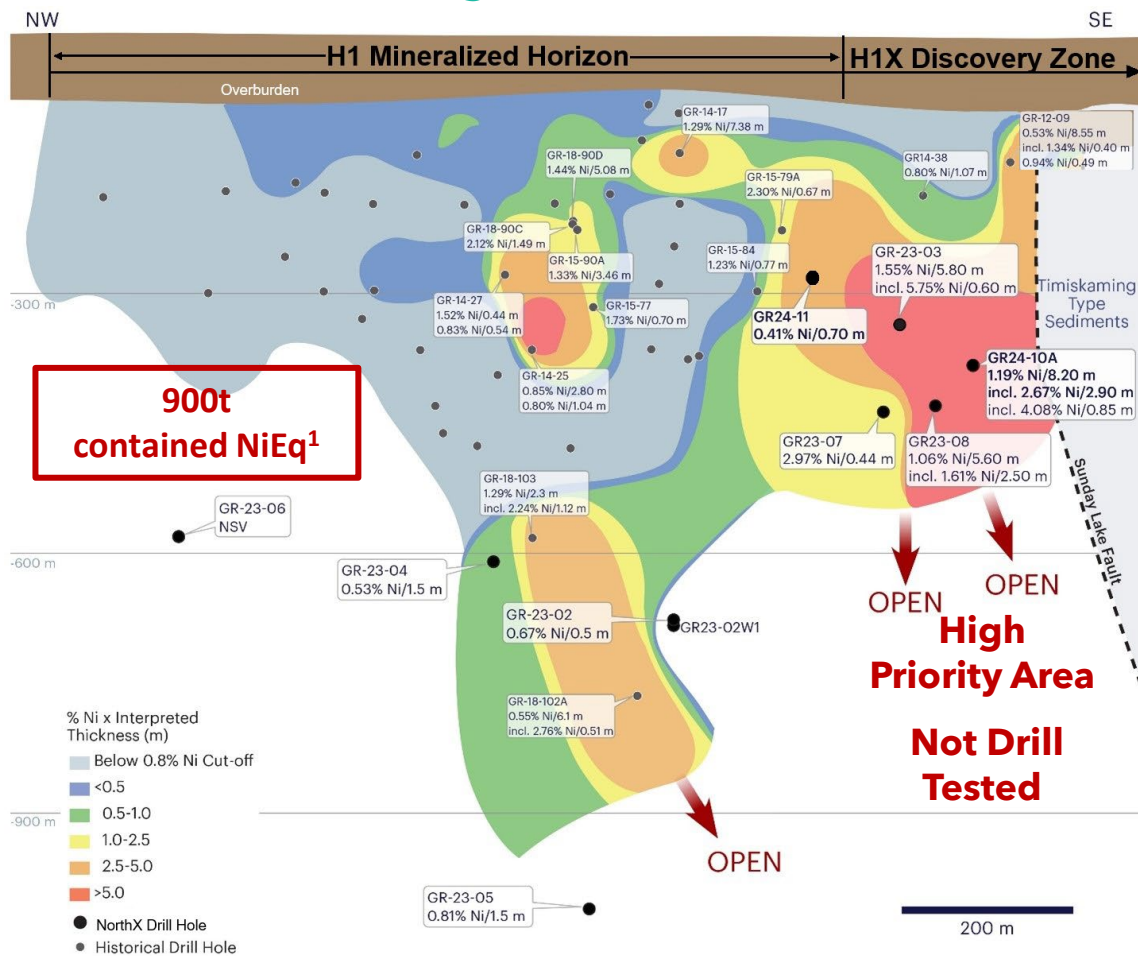


**Understanding where we are in geological system is crucial in locating the base (massive sulphides)**

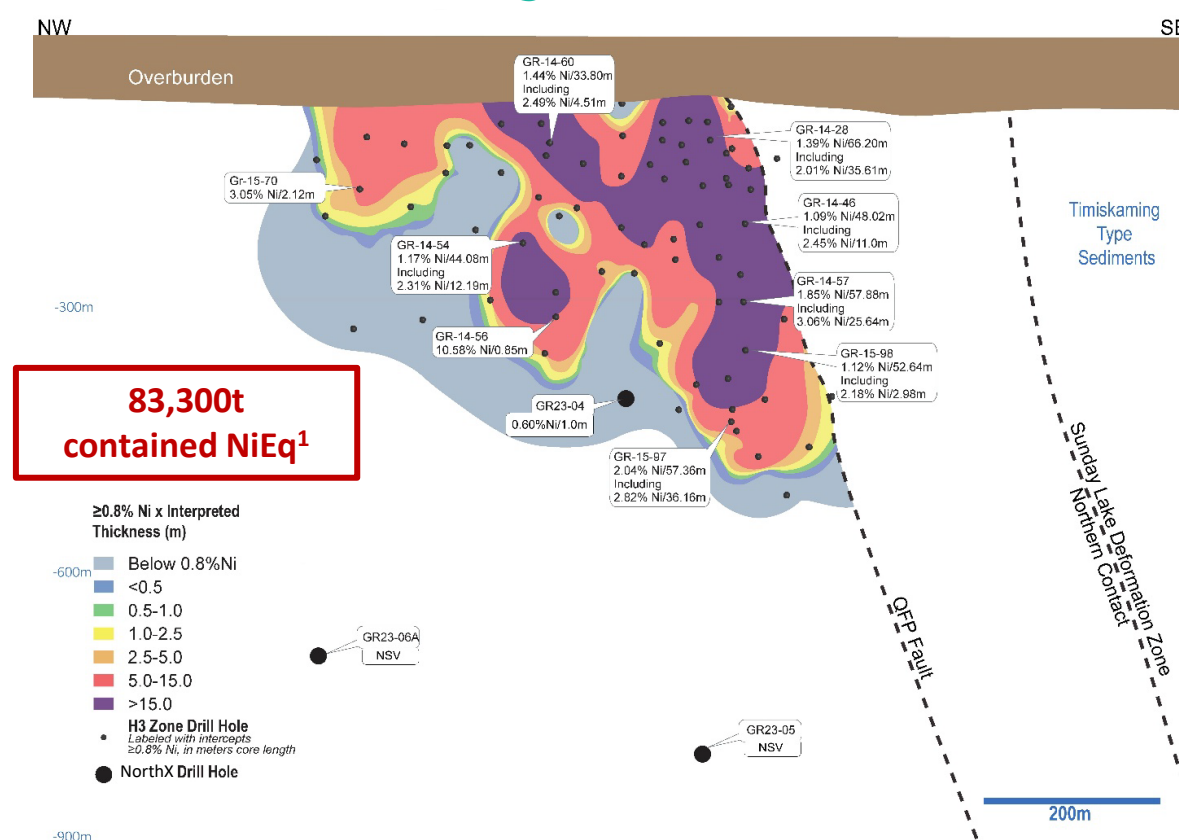
# Comparing H1 to H3 - What's Missing?



## H1 Longitudinal Section



## H3 Longitudinal Section



**The high-grade portion of H3 (98% of resource) can easily fit within the undrilled portion of H1**

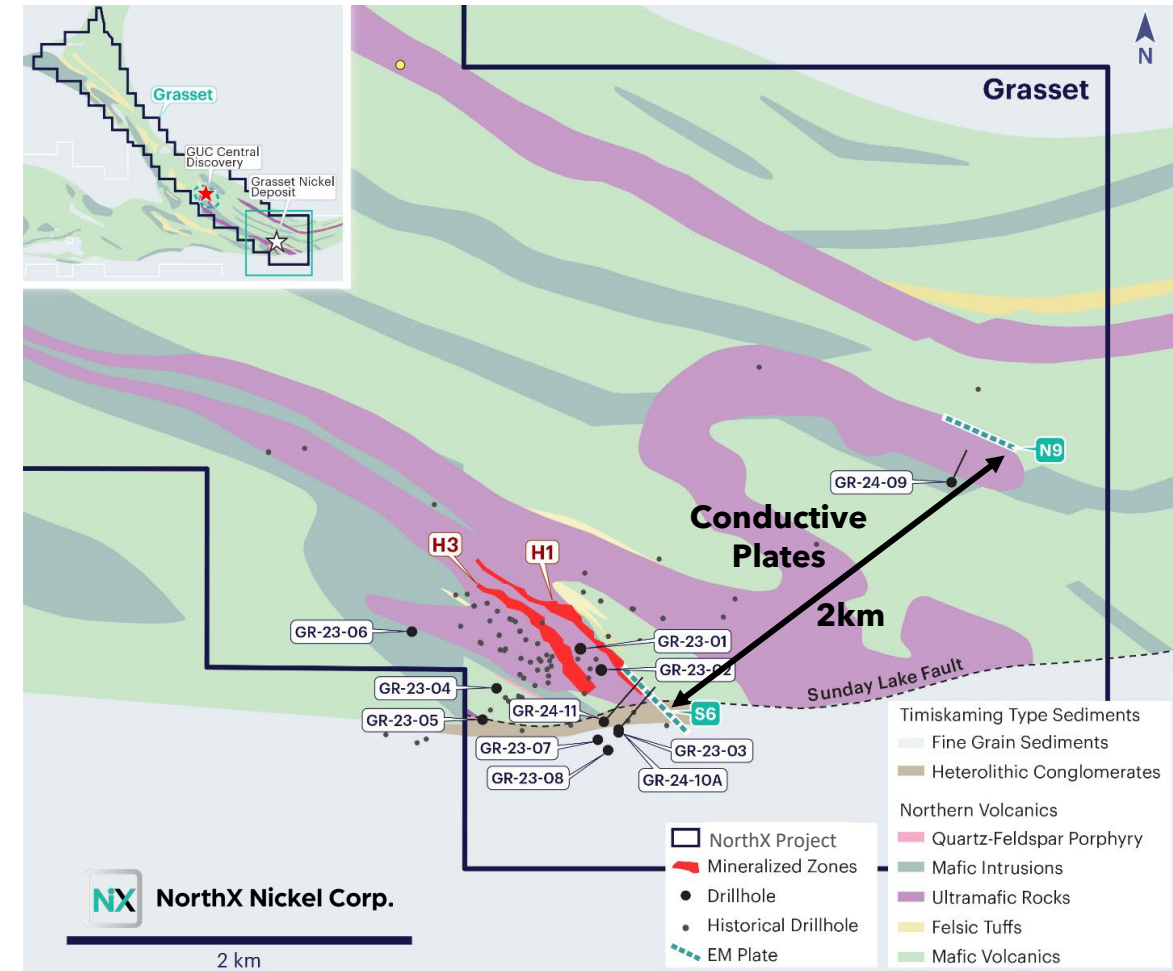


# 2023 Summer Geophysics - Discover New Deposits



## 2023 Downhole Electromagnetic (DHEM) Survey

- InfiniTEM-XL ground EM successfully defined conductive plate (S6) consistent with high-grade mineralization discovered in hole GR23-03
- The S6 conductor begins 290m below surface and is 400m x 400m
- Very similar 400m x 400x conductive plate (N9) identified at the same depth approximately two kilometres north-east of S6
- Both conductive plates are located at the northern basal contact of an ultramafic sequence
- To date, only one shallow hole, almost two kilometres to the northwest, has intersected the ultramafic contact where N9 is located
- EM conductors (plates) are indicative of massive sulphides
- The size of the conductive anomalies suggests a much better continuity at depth when compared to the numerous small conductors detected closer to surface



**New geophysics have discovered a highly-conductive anomaly (N9) very similar to what extends past current resource (S6)**

# GUC Central Discovery - Discover New Deposits



GUC Central Discovery - 7 km NW of the Grasset Deposit

## High-Grade Massive Sulphides

FAB-18-58 returned the best intercept to date with 7.58 m at 1.05% Ni, 0.31% Cu, 0.05% Co, 0.20 g/t Pt and 0.48 g/t Pd

## Classic Sulphide Segregation

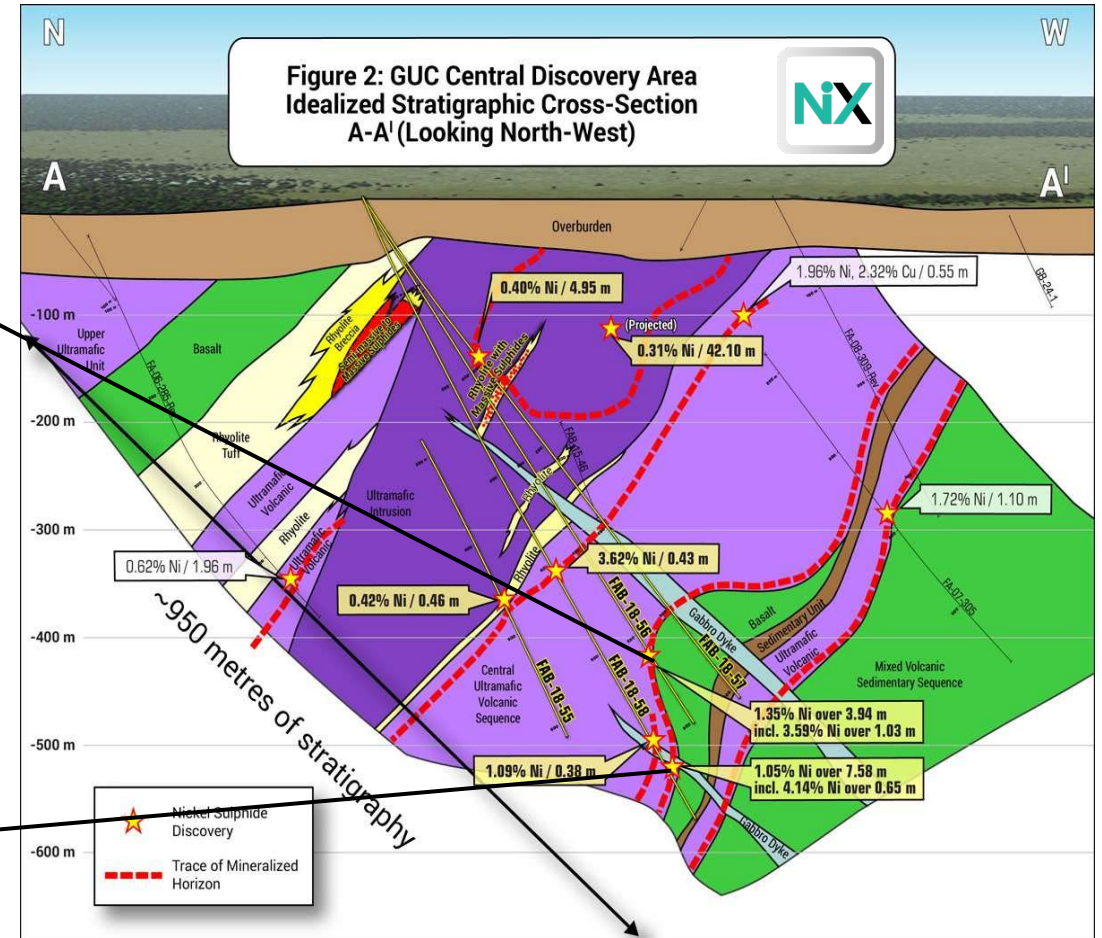
Classic sulphide segregation/settling textures grading down-sequence from disseminated, to net-textured matrix, to massive sulphide, over widths of 5 to 20 m

## Bulk Tonnage Potential

Bulk tonnage potential with 950 m of favourable SW dipping ultramafics and several horizons of nickel sulphides

3.59% Ni over 1.03m within  
1.35% Ni over 3.94m

4.14% Ni over 0.65m within  
1.05% Ni over 7.58m



**GUC Central hosts 950m thick ultramafics with several horizons of nickel sulphides**

# Sudbury Basin: A World Class Nickel Camp

Canada's largest mining camp with a 135+ year history



## Unique Geological Formation

The Sudbury Igneous Complex (SIC) is a unique geological feature that is the result of an eroded 1.8-billion-year-old impact crater

## A History of Mining

Since the late 1800's, 77 mines have produced over 1.8 billion tonnes of ore worth an estimated \$330+ billion using current metal prices<sup>1</sup>

## Excellent Infrastructure

Well-developed infrastructure with a network of roads, railways, and pipelines that connect the mines to processing plants and transportation hubs. Two mills, two smelters, and one refinery (Glencore & Vale)

## Skilled Workforce

Highly skilled workforce with expertise in all aspects of mining, from exploration to extraction to processing

## Supportive Government

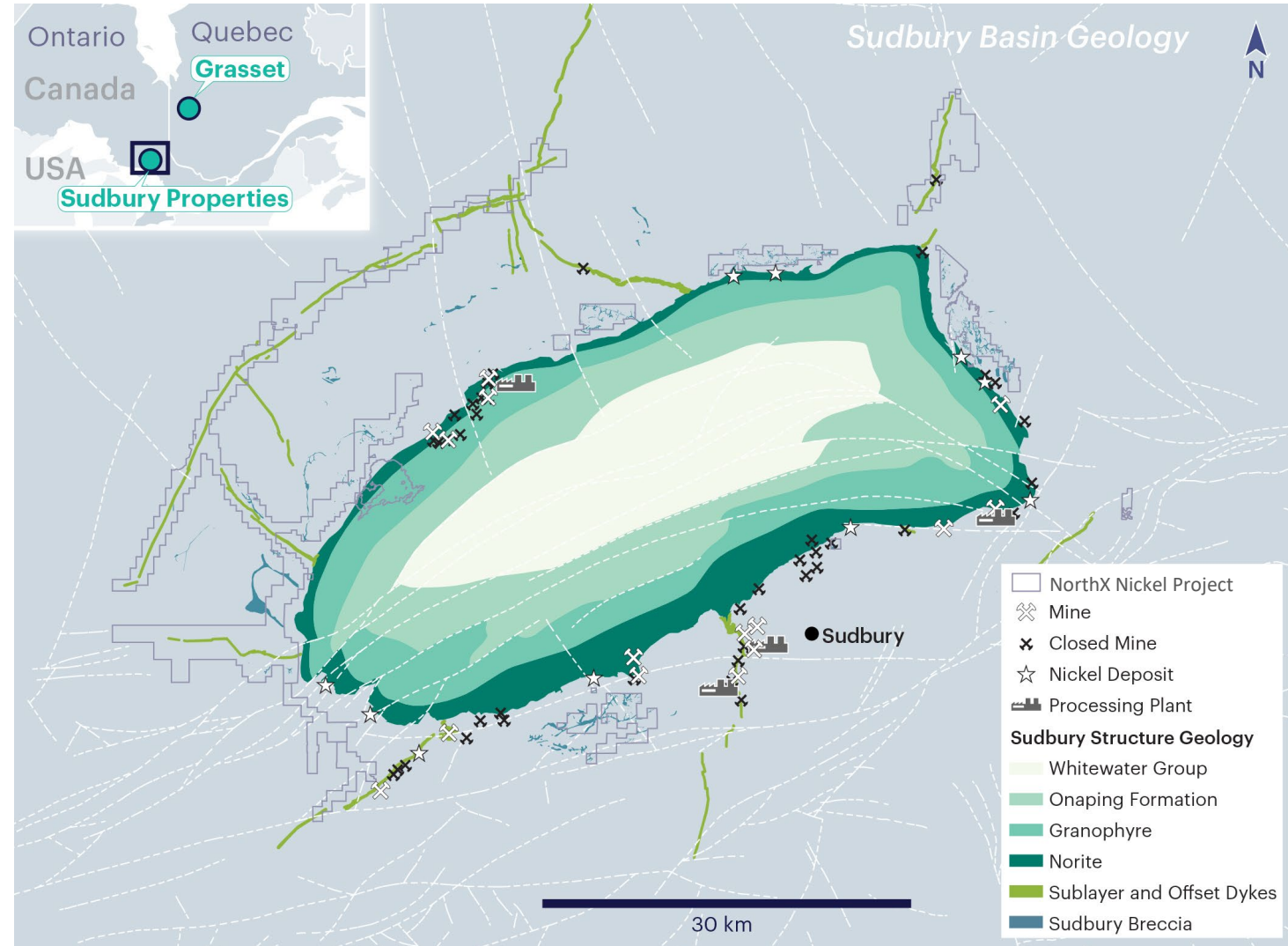
Ontario government provides a supportive regulatory environment with clear, positive and predictable policies that encourage exploration, development, and investment

## Community Partnerships

Strong, collaborative, working partnerships with the First Nations and local communities that benefit all stakeholders

## Sustainable Practices

Significant investments have been made in recent years to reduce emissions and waste, protect local ecosystems, and promote sustainable practices



<sup>1</sup> Natural Resources Canada and Ontario Geological Survey 2015. Discovery Site of Sudbury Mining Camp, Greater Sudbury: Birthplace of a world-famous mining district; GeoTours Northern Ontario series.



# Sudbury Portfolio

The 3<sup>rd</sup> largest land package in the world's 2<sup>nd</sup> largest nickel district



## Substantial, Strategic & Protected

- Large, prospective and under-explored land package with blue sky exploration potential
- Focus areas share similarities to other tier-one deposits in Sudbury
- Significant reserve work credits (~\$30 mil) will keep portfolio in good standing for decades without additional expenditures

## High Priority Offset Dykes

Radial offset dykes, particularly at Parkin (9.4 km) and Trill (9.5 km), retain considerable untested discovery potential

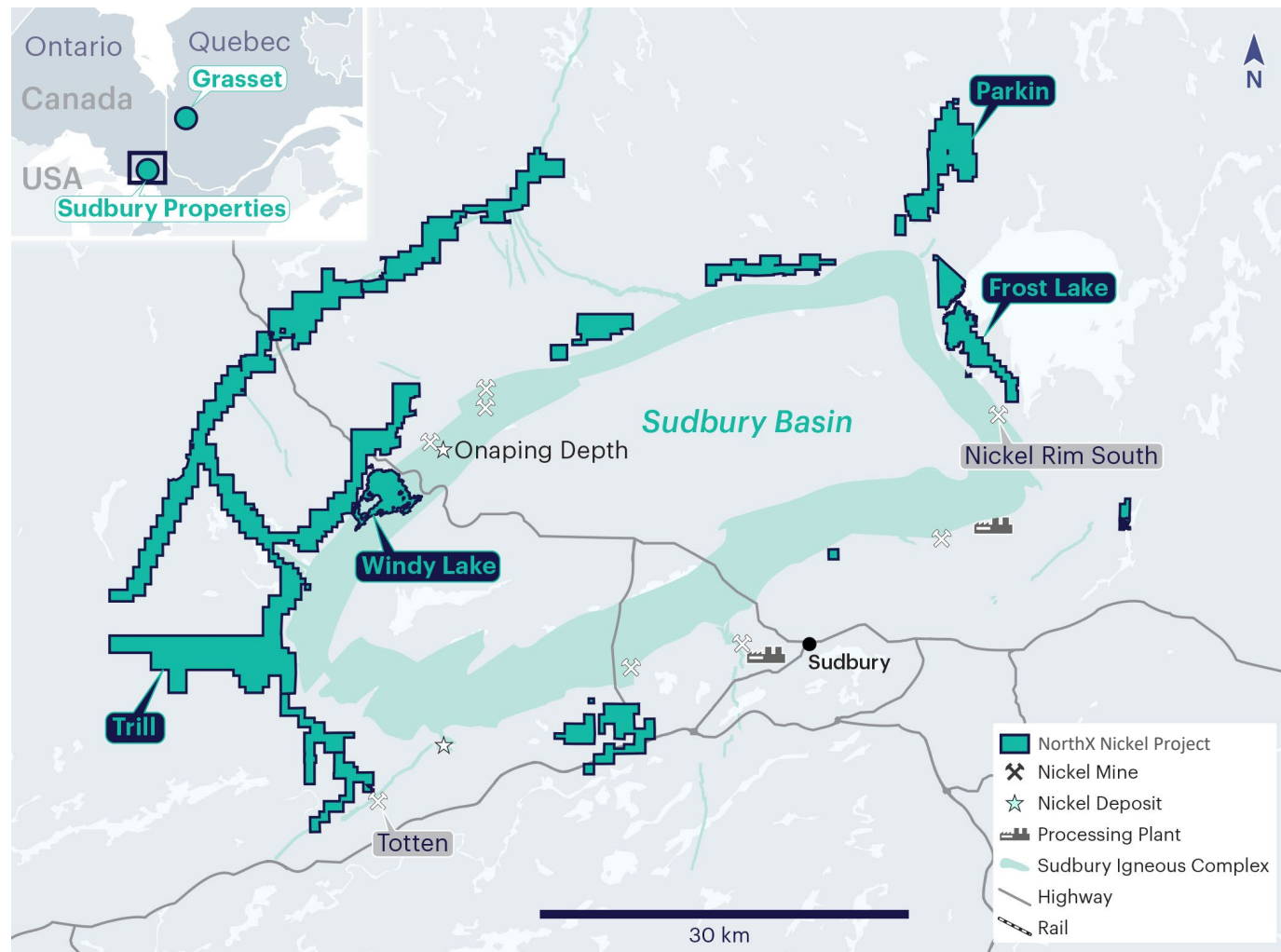
## Footwall & Contact Targets

### Windy Lake

- Cu-Ni-PGM footwall potential of the Sudbury Igneous Complex
- Contact deposit potential on the property with the Onaping Depth Deposit 4km to the east (14.5 Mt @ 1.67% Ni)

### Frost Lake

Highly prospective for copper-rich footwall-style mineralization (Cu-Ni-PGM) in the East Range of the SIC



# Parkin: Advanced Exploration

*A past-producing, well-endowed embayment structure with new discoveries*



## 9.4 km of Untested Offset Dyke

Sudbury offset dyke hosted deposits are an important deposit type in Sudbury, accounting for ~1/3<sup>rd</sup> of the total ore mined - typically have a concentration of PGMs

## Well Endowed Embayment Structure

The Whistle and Parkin offset dykes are the continuation of well-endowed troughs and depressions with recent high-grade Ni-Cu-PGM discoveries

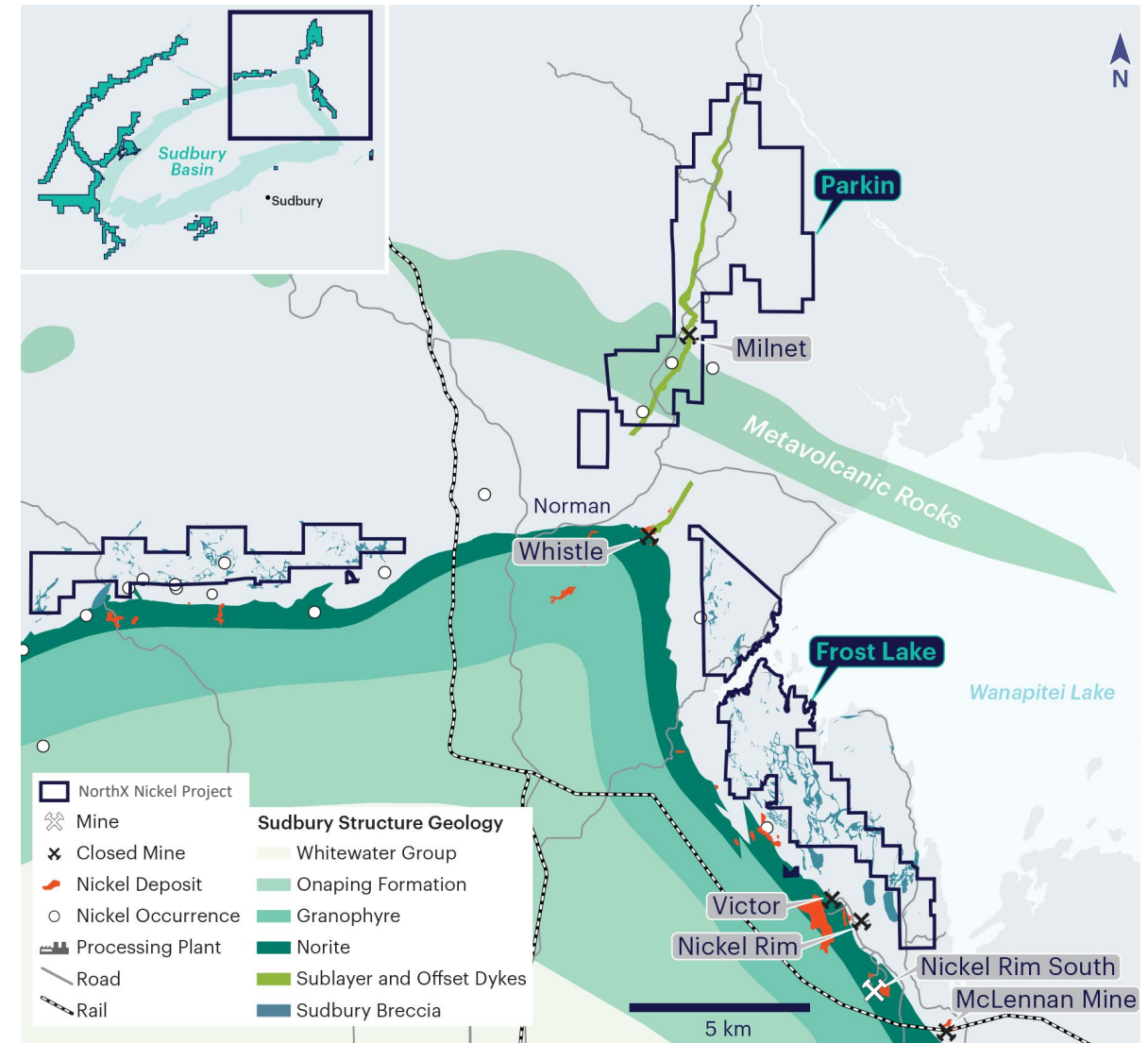
- Norman West: Glencore ~23 Mt @ 3.1% NiEq, 6% CuEq (2019)

## Underexplored & Highly Prospective

- North of past-producing Milnet Mine is largely unexplored with no ground geophysics and poor airborne survey coverage
- South of Milnet Mine has seen no deep drilling
- North and South Zone Deposits are untested at depth

## An Increase in Activity

Vale and Glencore have recently increased exploration efforts in the area and both companies are currently conducting large-scale drilling campaigns



# Parkin: Advanced Exploration

Offset dyke hosted Ni-Cu-PGM mineralization



## Significant Growth Potential

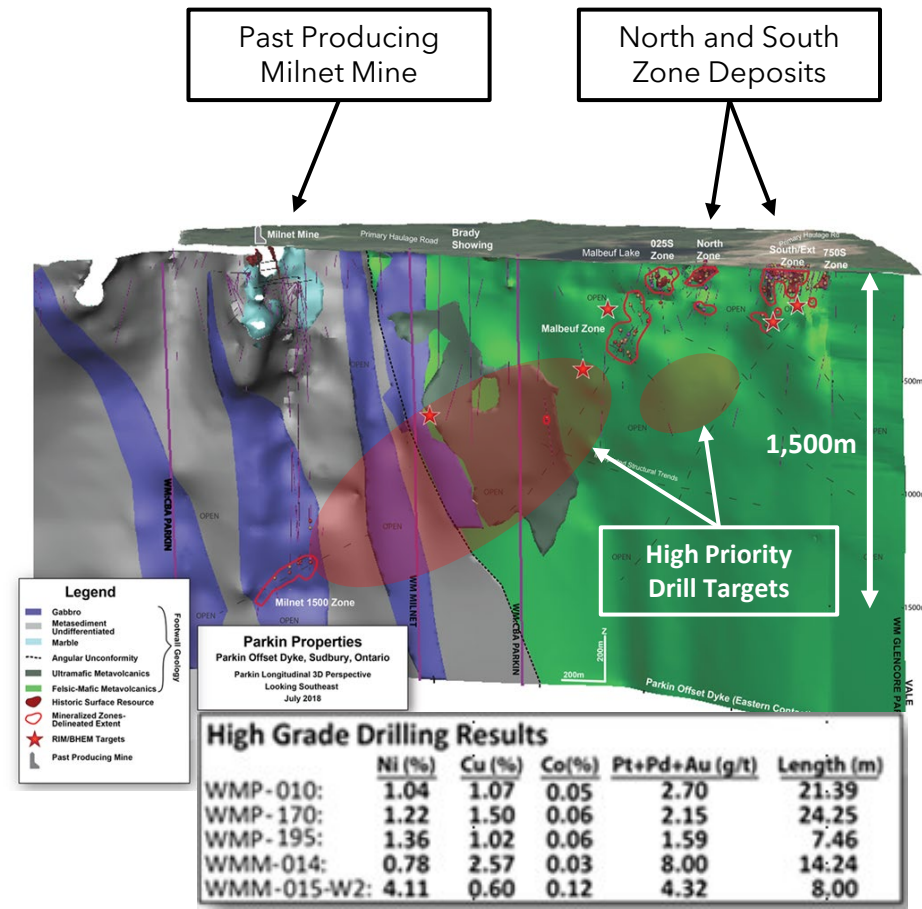
- Near surface historic resource (North and South Zone deposits) with five mineralized zones over a 750 m strike length
- Mineralized zones are associated with off-hole conductors that have never been drilled
- Several significant intersections below the historic resource are open laterally and at depth

## Nearby Analogues

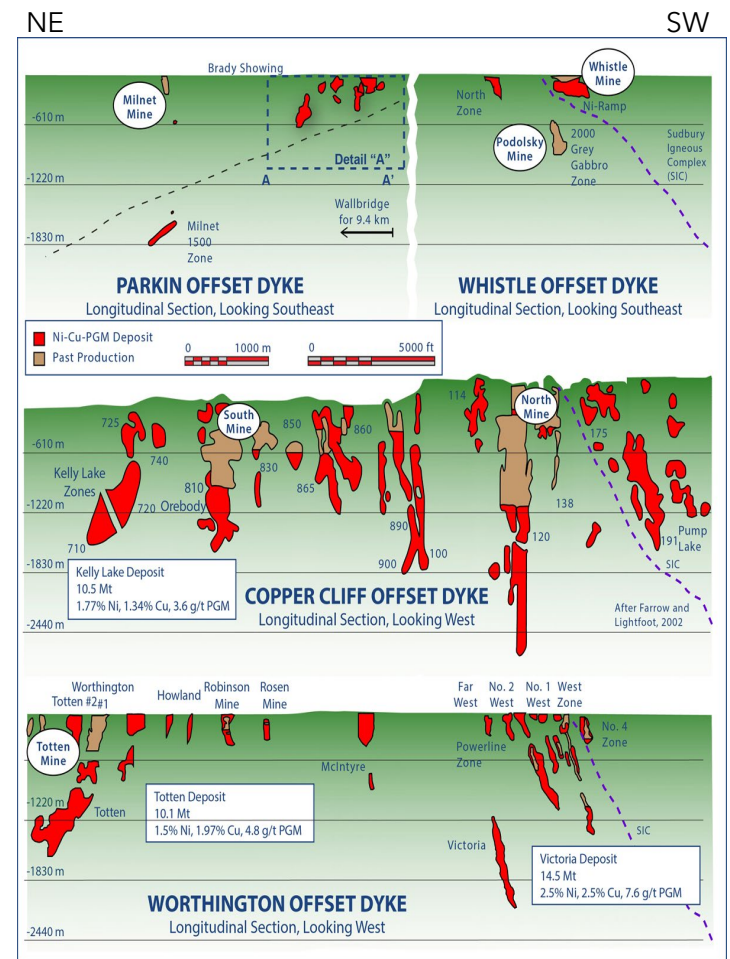
Similar geology to Copper Cliff (Kelly Lake deposit) and Worthington (Victoria deposit) offset dykes. Considerable discovery potential remains

## Brownfield Targets

Past-producing Milnet Mine has seen very little drilling below the resource, yet still yielded the high-grade Milnet 1500 Zone



Source: Wallbridge Corporate Presentation





# Sudbury Exploration Priorities

*Planned exploration of the Sudbury portfolio*



## Parkin

Advanced exploration with 9.4 km of the Parkin Offset Dyke

- Detailed 3D modeling of geology and geophysics
- Diamond drilling
- Borehole time domain and surface EM

## Trill

Advanced exploration with 9.5 km of the Trill Offset Dyke

- Detailed 3D modeling of geology and geophysics
- Drone magnetic survey
- Prospecting, and mechanical stripping

## Windy Lake

Grassroots exploration with targets along the SIC contact

- Reprocessing extensive historic geophysical data
- Detailed 3D geological modeling
- Expansion of geophysical coverage
- Seismic survey
- Analogue to Glencore's Onaping Depth, 4km to the east

## Frost Lake

Grassroots exploration with targets along the SIC footwall

- Review geology and geophysical data
- 3D modeling and interpretation
- Target generation for future drilling

# Why NorthX Nickel Corp.?



Grasset is the only undeveloped nickel sulphide deposit (>50kt Ni, >1.5% NiEq) in NA not held by a major



## Asset Portfolio

### Grasset

100% owned, 5.5 Mt Indicated Resource<sup>1</sup> @ 1.53% NiEq in the Abitibi Greenstone Belt with room to grow

### Sudbury

Large, strategic portfolio in the world-renowned Sudbury Basin



## Strategy

Expand existing Grasset high-grade nickel sulphide resource  
Discover new nickel deposits on our 23-km Grasset claim block

Generate and target industry-significant high-grade nickel sulphide deposits

## Near Term Valuation Re-Rating

Unlock exploration upside and high-grade potential at Grasset and along 23-km claim block

Optimize and daylight optionality in largely ignored Sudbury portfolio

## Additional Exploration Upside

Target geophysical anomalies (e.g. N9) and follow-up on GUC Central potential

Geophysics and targeting in advanced Parkin Project in the Sudbury Camp

## Growth

Quantify H1X Discovery Zone potential

Follow up work on Trill, Windy Lake and Frost Lake in the Sudbury Camp

# Strong Metal Inventory<sup>1,2</sup>

Substantial metal endowment underpinning the value of Grasset



>0.80% NiEq	Tonnes (t)	NiEq (%)	Ni (%)	Cu (%)	Co (%)	Pt (g/t)	Pd (g/t)	Contained NiEq (t)	Contained Ni (t)	Contained Cu (t)	Contained Co (t)	Contained Pt (oz)	Contained Pd (oz)
<b>Indicated</b>													
Horizon 1	89,200	1.00	0.82	0.09	0.03	0.15	0.33	900	700	100	20	400	1,000
Horizon 3	5,422,700	1.54	1.22	0.13	0.03	0.26	0.64	83,300	66,400	7,300	1,400	45,400	112,200
<b>Total Indicated</b>	<b>5,512,000</b>	<b>1.53</b>	<b>1.22</b>	<b>0.13</b>	<b>0.03</b>	<b>0.26</b>	<b>0.64</b>	<b>84,200</b>	<b>67,100</b>	<b>7,400</b>	<b>1,400</b>	<b>45,800</b>	<b>113,100</b>
<b>Inferred</b>													
Horizon 1	13,600	0.95	0.78	0.09	0.02	0.14	0.32	100	100	10	3	100	100
Horizon 3	203,500	1.01	0.83	0.09	0.02	0.15	0.34	2,100	1,700	200	40	1,000	2,200
<b>Total Inferred</b>	<b>217,100</b>	<b>1.01</b>	<b>0.83</b>	<b>0.09</b>	<b>0.02</b>	<b>0.15</b>	<b>0.34</b>	<b>2,200</b>	<b>1,800</b>	<b>200</b>	<b>43</b>	<b>1,000</b>	<b>2,400</b>

1. The Resource Estimate is based on a 0.80% NiEq cut-off grade. The independent and qualified person for the Resource Estimate, as defined by NI 43-101, is Carl Pelletier, P. Geo. (InnovExplo Inc.). The effective date of the Grasset 2021 MRE is November 9, 2021. These mineral resources are not mineral reserves as they do not have demonstrated economic viability. The Resource Estimate follows 2014 CIM Definition Standards and the 2019 CIM MRMR Best Practice Guidelines. Two mineralized zones were modelled in 3D using a minimum true width of 3.0 m. Density values are interpolated from density databases, capped at 4.697 g/cm<sup>3</sup>. High-grade capping was done on raw assay data and established on a per zone basis for nickel (15.00%), copper (5.00%), platinum (5.00 g/t) and palladium (8.00 g/t). Composites (1-m) were calculated within the zones using the grade of the adjacent material when assayed or a value of zero when not assayed. The Resource Estimate was completed using a block model in GEMS (v.6.8) using 5m x 5m x 5m blocks. Grade interpolation (Ni, Cu, Co, Pt, Pd, Au and Ag) was obtained by ID2 using hard boundaries. Results in NiEq were calculated after interpolation of the individual metals. The Resource Estimate is categorized as indicated and inferred based on drill spacing, geological and grade continuity. A maximum distance to the closest composite of 50 m was used for indicated mineral resources and 100 m for the inferred mineral resources. The criterion of reasonable prospects for eventual economic extraction was met by having constraining volumes applied to any blocks (potential underground extraction scenario) using DSO and by the application of a cut off grade of 0.80% NiEq. Cut-off calculations used: Mining = C\$65.00/t; Maintenance = C\$10.00/t; G&A = C\$20.00/t; Processing = C\$42.00/t. The cut-off grades should be re-evaluated in light of future prevailing market conditions (metal prices, exchange rate, mining cost, etc.). **The NiEq formula used a USD:CAD exchange rate of 1.31, a nickel price of US\$6.95/lb, a copper price of US\$3.33/lb, a cobalt price of US\$17.06/lb, a platinum price of US\$984.85/oz, and a palladium price of US\$2,338.47/oz.** Gold and silver do not contribute to the economics of the deposit. Results are presented undiluted and in-situ. Ounce (troy) = metric tons x grade / 31.10348. Metric tons and ounces were rounded to the nearest hundred. Metal contents are presented in ounces and pounds. Any discrepancies in the totals are due to rounding effects; rounding followed the recommendations in NI 43-101. The QP is not aware of any known environmental, permitting, legal, title-related, taxation, socio-political, marketing or other relevant issue that could materially affect the Resource Estimate.

2. The quantity and grade of reported inferred resources in the Resource Estimate are uncertain in nature and there has been insufficient exploration to define these inferred resources as an indicated or measured mineral resource and it is uncertain if further exploration will result in upgrading them to an indicated or measured mineral resource category.





# NorthX Nickel Corp.

**Tom Meyer**

President & CEO, Director  
[tom@northxnickel.com](mailto:tom@northxnickel.com)

**General Contact**

+1 866 899 7247  
[info@northxnickel.com](mailto:info@northxnickel.com)

*A Leading Canadian Nickel  
Explorer & Developer*

northxnickel.com

CSE: NIX | OTC: NXNIF | FSE: 6YR